



LED CONVERTER

INDOOR LIGHT CONVERTER

WATERPROOF CONVERTER

ENCLOSED SWITCHING POWER SUPPLY

LOW COST TYPE

GENERAL TYPE

OTHERS

U
N
I
O
N



N
I

www.unionelecom.co.kr

ELECOM CO., LTD.



COM

**Dream
come
true
with us**

We have grown to the provider of the total solution in the field of electric power and electronic parts by developing and manufacturing various reliable SMPS, SSR, Noise Filter using all our employees creativity, passion and ability to rise to challenge.

We have done tremendous efforts for our customers to use SMPS, SSR, Noise Filter with high reliability and high efficiency in the field of indoor and outdoor LED lighting, communication, industrial field, electric sign board, broadcasting, electric system, banking, medical equipment etc.

We will also cope with developing and manufacturing SMPS of customized specification for the satisfaction of various and changing requirements of customers very quickly and production of small quantity with various kinds.



CB



IP68



SELV

LPS



UNION
● ELCOM CO., LTD.

LED CONVERTER

INDOOR LIGHT CONVERTER

UPF-CM Series	24~30W	4
UPF-CF Series	24~30W	5
UP-J Series	24W	6
UP-F Series	30W	7

WATERPROOF CONVERTER

UP-WH Series	60W	9
UP-W1 Series	40~300W	10
UP-W2(V1) Series	40~300W	11
UPF-W(V1) Series	60~200W	12
UPF-CW(V1) Series	60~200W	13

ENCLOSED SWITCHING POWER SUPPLY

LOW COST TYPE

UP-L2 Series	50~350W	15
UP-L Series	15~350W	16

GENERAL TYPE

UP Series	15~1500W	17
-----------	----------	----

OTHERS

18



LED CONVERTER
INDOOR LIGHT CONVERTER

UPF-CM SERIES
UPF-CF SERIES
UP-J SERIES
UP-F SERIES



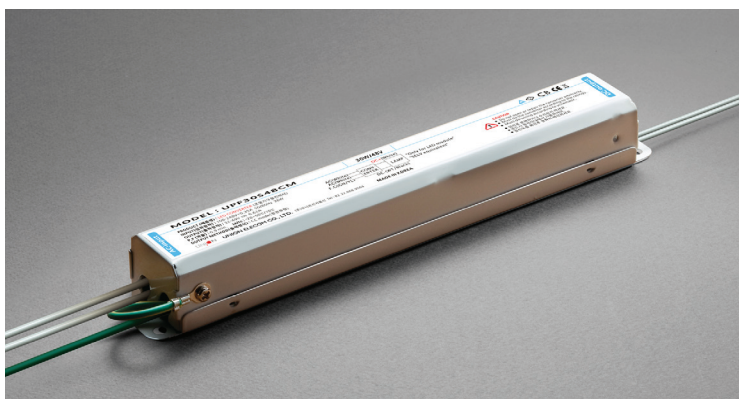
UPF-CM SERIES

24~30W

single output with constant current circuit and PFC function



- Constant current design
- Built-in PFC function
- Wide input voltage range
- Protections : Overload/Over voltage/Short circuit.
- Cooling by free air convection
- IP20 design for indoor installations
- 100% full load burn-in test
- Suitable for LED fluorescent light and office lighting applications
- Metal case
- 3years warranty



- AC input voltage range : **90-264VAC**
- Power Factor : 0.9 min.(F24CM:over 21W of Power, F30CM:over 24W of Power)
- Current adjustment range : Fixed,can be modified within -15% rated output current.
- Over voltage protection : 115-140% rated output voltage
- Withstanding voltage
I-O : 3.75KVAC, I-FG : 1.88KVAC, O-FG : 0.5KVAC, 1minute
- Isolation resistance
I-O, I-FG, O-FG : 100 M ohms/500VDC
- Working temperature : -20~+50°C
- Safety standards : EN61347-1,EN61347-2-13 / J61347-1,J61347-2-13 / K61347-1,K61347-2-13
- EMC standards : J55015 / K00015,K61547,K61000-4-2,3,4,5,6,11

IP20    SELV LPS    CB CE 

Model No.	Input Voltage	Output Voltage	Output Current	Efficiency	Max. Power	Size(mm)/Weight
UPF24S24CM	AC90~264V	18~24V	1A	85%	24W	212x33x26/0.2kg
UPF24S48CM		34~41V	0.6A	87%	24W	
UPF30S24CM	AC90~264V	18~24V	1.25A	85%	30W	212x33x26/0.2kg
UPF30S48CM		33~48V	0.62A	87%	30W	

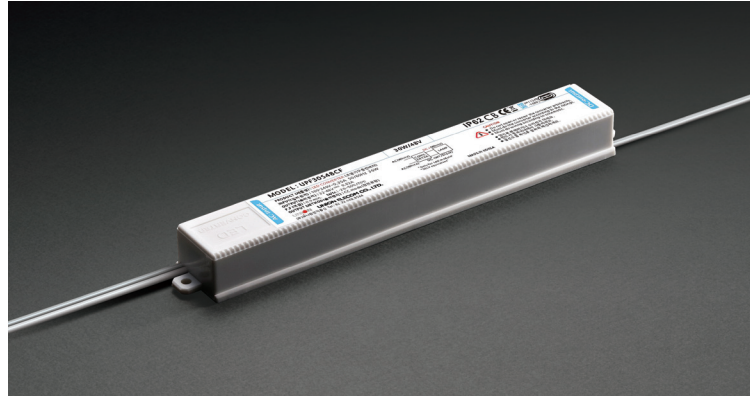
UPF-CF SERIES

24~30W

single output with constant current circuit and PFC function



- **Constant current design**
- Built-in PFC function
- Wide input voltage range
- Protections : Overload/Short circuit.
- Cooling by free air convection
- **IP62** design for indoor installations
- 100% full load burn-in test
- **Suitable for LED fluorescent light and office lighting applications**
- **Plastic case**
- 3years warranty



- AC input voltage range : **90-264VAC**
- Power Factor : 0.9 min. (Condition: over 21W of Power)
- Current adjustment range : Fixed, can be modified within -15% rated output current.
- Withstanding voltage
I-O : 3.75KVAC, 1minute
- Isolation resistance
I-O : 100 M ohms/500VDC
- Working temperature : -20~+50°C
- Safety standards : EN61347-1, EN61347-2-13 / K61347-1, K61347-2-13
- EMC standards : K00015, K61547, K61000-4-2,3,4,5,6,11

5



IP62    SELV LPS   CB CE 

Model No.	Input Voltage	Output Voltage	Output Current	Efficiency	Max. Power	Size(mm)/Weight
UPF24S24CF	AC90~264V	18~24V	1A	83%	24W	193.4x28.3x19/0.13kg
UPF24S48CF		36~48V	0.5A	84%	24W	
UPF30S24CF	AC90~264V	18~24V	1.25A	84%	30W	193.4x28.3x19/0.13kg
UPF30S48CF		36~48V	0.62A	85%	30W	

UP-J SERIES

24W

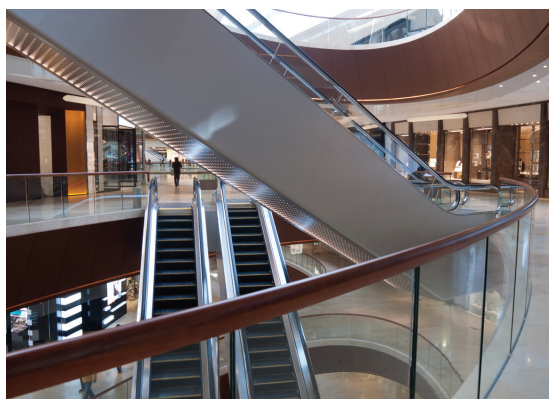
single output
with constant voltage circuit



- **Constant voltage design**
- Wide input voltage range
- Protections : Overload/Over voltage/Short circuit.
- Cooling by free air convection
- **IP62** design for indoor installations
- 100% full load burn-in test
- **Suitable for LED indoor lighting and LED electrical display applications**
- **Plastic case**
- 3years warranty



- AC input voltage range : **90-264VAC**
- DC adjustment range : Fixed
- Over load protection : over 110% of rating, auto-recovery
- Over voltage protection : 115-140% rated output voltage
- Withstanding voltage
I-O : 3.75KVAC, 1minute
- Isolation resistance
I-O : 100 M ohms/500VDC
- Working temperature : -20~+50°C
- Safety standards : J61347-1, J61347-2-13
- EMC standards : J55015



IP62    **SELV LPS CB**  

Model No.	Input Voltage	Output Voltage	Output Current	Efficiency	Max. Power	Size(mm)/Weight
UP24S12J	AC90~264V	12V	2A	82%	24W	193.4x28.3x19/0.13kg
UP24S24J	AC90~264V	24V	1A	83%	24W	193.4x28.3x19/0.13kg

UP-F SERIES

30W

single output
with constant voltage circuit



- **Constant voltage design**
- Wide input voltage range
- Protections : Overload/Over voltage/Short circuit.
- Cooling by free air convection
- **IP62** design for indoor installations
- 100% full load burn-in test
- **Suitable for LED indoor lighting and LED electrical display applications**
- **Plastic case**
- 3years warranty



- AC input voltage range : 90-264VAC
- DC adjustment range : Fixed
- Over load protection : over 110% of rating, auto-recovery
- Over voltage protection : 115-140% rated output voltage
- Withstanding voltage
I-O : 3.75KVAC, 1minute
- Isolation resistance
I-O : 100 M ohms/500VDC
- Working temperature : -20~+50°C
- Safety standards : EN61347-1,EN61347-2-13 / K61347-1,K61347-2-13
- EMC standards : K00015,K61547,K61000-4-2,3,4,5,6,11



IP62    SELV LPS CB CE 

Model No.	Input Voltage	Output Voltage	Output Current	Efficiency	Max. Power	Size(mm)/Weight
UP30S12F	AC90~264V	12V	2.5A	83%	30W	193.4x28.3x19/0.13kg
UP30S24F	AC90~264V	24V	1.25A	83%	30W	193.4x28.3x19/0.13kg



LED CONVERTER

WATERPROOF CONVERTER

- UP-WH SERIES
- UP-W1 SERIES
- UP-W2(V1) SERIES
- UPF-W(V1) SERIES
- UPF-CW(V1) SERIES



UP-WH SERIES

60W

single output
with constant voltage circuit

- **Constant voltage design**

- Protections : Overload/Over voltage/Short circuit/Over temperature
- Cooling by free air convection
- **IP68** design for indoor installations
- 100% full load burn-in test
- **Suitable for LED indoor lighting and moving sign applications**
- **Metal case**
- 3years warranty



- AC input voltage range : **90-277VAC**
- DC adjustment range : Fixed, can be modified within $\pm 5\%$ rated output voltage.(but, do not use over the rated Power)
- Over load protection : over 110% of rating, auto-recovery
- Over voltage protection : 115-140% rated output voltage
- Withstanding voltage
I-O : 3KVAC, I-FG : 1.5KVAC, O-FG : 0.5KVAC, 1minute
- Isolation resistance
I-O, I-FG, O-FG : 100 M ohms/500VDC
- Working temperature
-30~+50°C(refer to output derating curve)
- Safety standards: UL879
- EMC standards : FCC Part 15 class B



IP68     SELV LPS  FC

Model No.	Input Voltage	Output Voltage	Output Current	Efficiency	Max. Power	Size(mm)/Weight
UP60S12WH	AC90~277V	12V	5A(3.75A@ 50°C)	82%	60W	developing

UP-W1 SERIES

40~275W

single output
with constant voltage circuit

- **Constant voltage design**
- Protections : Overload/Over voltage/Short circuit / Over temperature (for 100~150W only)
- Cooling by free air convection
- **IP67(40~60W)or IP68(100~300W)design** for outdoor installations
- Class 2 power unit(for 40~60W only)
- 100% full load burn-in test
- **Suitable for LED lighting and moving sign applications**
- **Plastic case : 40~60W**
- **Metal case : 100~300W**
- 3years warranty



- AC input voltage range : **100-120VAC**
- DC adjustment range : Fixed, can be modified within $\pm 5\%$ rated output voltage.(but, do not use over the rated Power)
- Over load protection : over 110% of rating, auto-recovery
- Over voltage protection : 115-140% rated output voltage
- Withstanding voltage
I-O : 3KVAC, I-FG : 1.5KVAC, O-FG : 0.5KVAC, 1minute
- Isolation resistance
I-O, I-FG, O-FG : 100 M ohms/500VDC
- Working temperature : $-30\sim+50^{\circ}\text{C}$ (refer to output derating curve)
- Safety standards: UL879(except for 200W, 275W)
- EMC standards : FCC Part 15 class B (except for 200W, 275W)



IP67 IP68     SELV LPS  

Model No.	Input Voltage	Output Voltage	Output Current	Efficiency	Max. Power	Size(mm)/Weight
UP40S12W1	AC100~120V	12V	3.3A(2.49A@50°C)	82%	40W	146.5x42.5x38/0.3kg
UP60S12W1	AC100~120V	12V	5A(3.75A@50°C)	82%	60W	170.5x42.5x38/0.35kg
UP100S12W1	AC100~120V	12V	8.4A(6.24A@50°C)	82%	100W	207x56.7x42.3/0.7kg
UP150S12W1	AC100~120V	12V	12.5A(9.37A@50°C)	84%	150W	209x74x46.5/0.95kg
UP200S12W1	AC100~120V	12V	16.6A(12.49A@50°C)	85%	200W	235x74x46.5/1.15kg
UP300S12W1	AC100~120V	12V	22.9A(17.17A@50°C)	85%	275W	289x74x51/1.5kg

UP-W2(V1) SERIES

40~300W

single output
with constant voltage circuit



- **Constant voltage design**
- Protections : Overload/Over voltage/Short circuit
- Cooling by free air convection
- **IP67(40~60W)or IP68(100~300W)design for outdoor installations**
- 100% full load burn-in test
- **Suitable for LED lighting and moving sign applications**
- **Plastic case : 40~60W**
- **Metal case : 100~300W**
- 3years warranty



- AC input voltage range : **200-240VAC**
- DC adjustment range : Fixed,can be modified within $\pm 5\%$ rated output voltage(but, do not use over the rated Power)
- Over load protection : over 110% of rating, auto-recovery
- Over voltage protection : 115-140% rated output voltage
- Withstanding voltage
I-O : 3KVAC, I-FG : 1.5KVAC, O-FG : 0.5KVAC, 1minute
- Isolation resistance
I-O, I-FG, O-FG : 100 M ohms/500VDC
- Working temperature : $-30\sim+50^{\circ}\text{C}$ (refer to output derating curve)
- Safety standards : EN61347-1,EN61347-2-13 / K61347-1,K61347-2-13
- EMC standards : EN61204-3, EN61000-3-2,3/ K00015,K61547, K61000-4-2,3,4,5,6,11

IP68     SELV LPS CB CE 

Model No.	Input Voltage	Output Voltage	Output Current	Efficiency	Max. Power	Size(mm)/Weight
UP40S12W2(V1)	AC200~240V	12V	3.33A(2.49A@50°C)	83%	40W	146.5x42.5x38/0.3kg
UP40S24W2(V1)		24V	1.66A(1.24A@50°C)	85%	40W	
UP60S12W2(V1)	AC200~240V	12V	5A(3.75A@50°C)	83%	60W	170.5x42.5x38/0.35kg
UP60S24W2(V1)		24V	2.5A(1.87A@50°C)	85%	60W	
UP100S12W2(V1)	AC200~240V	12V	8.33A(6.24A@50°C)	85%	100W	207x56.7x42.3/0.7kg
UP100S24W2(V1)		24V	4.16A(3.12A@50°C)	88%	100W	
UP150S12W2(V1)	AC200~240V	12V	12.5A(9.37A@50°C)	85%	150W	209x74x46.5/0.9kg
UP150S24W2(V1)		24V	6.25A(4.68A@50°C)	88%	150W	
UP200S12W2(V1)	AC200~240V	12V	16.6A(12.49A@50°C)	85%	200W	230x74x46.5/1.1kg
UP200S24W2(V1)		24V	8.33A(6.24A@50°C)	88%	200W	
UP300S12W2(V1)	AC200~240V	12V	25A(18.75A@50°C)	85%	300W	279x74x51/1.45kg
UP300S24W2(V1)		24V	12.5A(9.37A@50°C)	88%	300W	

UPF-W(V1) SERIES

60~200W

single output with constant voltage circuit and PFC function



- **Constant voltage design**
- Built-in **PFC** function
- Wide input voltage range
- Protections : Overload/Over voltage/Short circuit
- **IP68** design for outdoor installations
- 100% full load burn-in test
- **Suitable for LED lighting and moving sign applications**
- **Metal case**
- 5years warranty



- AC input voltage range : **90-264VAC**
- Power Factor : 0.9 min. (Condition : 60%~100% rated Power)
DC adjustment range : Fixed,can be modified within $\pm 10\%$ rated output voltage. (but, do not use over the rated Power)
- Over load protection : over 110% of rating, auto-recovery
- Over voltage protection : 115-140% rated output voltage Withstanding voltage
I-O : 3.75KVAC, I-FG : 1.88KVAC, O-FG : 0.5KVAC, 1minute
- Isolation resistance
I-O, I-FG, O-FG : 100 M ohms/500VDC
- Working temperature : -30~+70°C(refer to output derating curve)
- Safety standards : EN61347-1,EN61347-2-13 / J61347-1,61347-2-13 / K61347-2-1,K61347-2-13
- EMC standards : J55015 / K00015,K61547,K61000-4-2,3,4,5,6,11

IP68     SELV LPS    CB CE 

Model No.	Input Voltage	Output Voltage	Output Current		Efficiency	Max. Power	Size(mm)/Weight
			90-176Vac	180-264Vac			
UPF60S12W(V1)	AC90~264V	12V	4.5A	5A	85%	60W	189x73x52.8/0.95kg
UPF60S24W(V1)		24V	2.5A	2.5A	87%	60W	
UPF60S36W(V1)		36V	1.66A	1.66A	88%	60W	
UPF60S48W(V1)		48V	1.25A	1.25A	88%	60W	
UPF75S12W(V1)	AC90~264V	12V	5.62A	6.25A	85%	75W	199x73x52.8/1.1kg
UPF75S24W(V1)		24V	3.12A	3.12A	87%	75W	
UPF75S36W(V1)		36V	2.08A	2.08A	88%	75W	
UPF75S48W(V1)		48V	1.56A	1.56A	88%	75W	
UPF100S12W(V1)	AC90~264V	12V	7.5A	8.33A	88%	100W	220x73x52.8/1.1kg
UPF100S24W(V1)		24V	4.16A	4.16A	91%	100W	
UPF100S36W(V1)		36V	2.77A	2.77A	91%	100W	
UPF100S48W(V1)		48V	2.08A	2.08A	91%	100W	
UPF150S12W(V1)	AC90~264V	12V	10A	12.5A	88%	150W	262x73x52.8/1.5kg
UPF150S24W(V1)		24V	5.62A	6.25A	91%	150W	
UPF150S36W(V1)		36V	3.74A	4.16A	91%	150W	
UPF150S48W(V1)		48V	2.8A	3.12A	91%	150W	
UPF200S12W(V1)	AC90~264V	12V	13.3A	16.6A	88%	200W	264x95x55/1.9kg
UPF200S24W(V1)		24V	7.5A	8.33A	91%	200W	
UPF200S36W(V1)		36V	5A	5.55A	91%	200W	
UPF200S48W(V1)		48V	3.74A	4.16A	91%	200W	

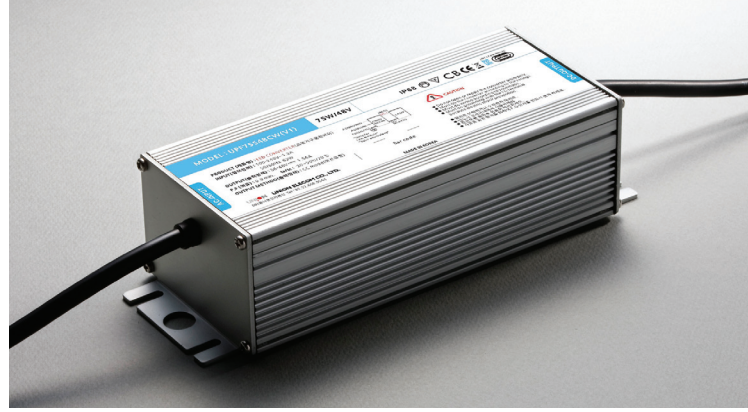
UPF-CW(V1) SERIES

60~200W

single output with constant current circuit and PFC function



- **Constant current design**
- Built-in PFC function
- Wide input voltage range
- Protections : Overload/Over voltage/Short circuit.
- IP68 design for outdoor installations
- 100% full load burn-in test
- **Suitable for LED lighting and moving sign applications**
- **Metal case**
- 5years warranty



- AC input voltage range : **90-264VAC**
- Power Factor : 0.9 min. (Condition : 60%~100% rated Power)
- Current adjustment range : Fixed, can be modified within -30~+10% rated output current(but, do not use over the rated Power)
- Over voltage protection : 115-140% rated output voltage
- Withstanding voltage
I-O : 3.75KVAC, I-FG : 1.88KVAC, O-FG : 0.5KVAC, 1minute
- Isolation resistance
I-O, I-FG, O-FG : 100 M ohms/500VDC
- Working temperature : -30~+70°C(refer to output derating curve)
- Safety standards : EN61347-1, EN61347-2-13 / J61347-1, 61347-2-13/ K61347-1, K61347-2-13
- EMC standards : J55015 / K00015, K61547, K61000-4-2,3,4,5,6,11

IP68     **SELV LPS**    **CB CE** 

Model No.	Input Voltage	Output Voltage	Output Current		Efficiency	Max. Power	Size(mm)/Weight
			90-176Vac	180-264Vac			
UPF60S24CW(V1)	AC90~264V	18~24V	2.5A	2.5A	87%	60W	189x73x52.8/0.95kg
UPF60S36CW(V1)		27~36V	1.66A	1.66A	89%	60W	
UPF60S48CW(V1)		36~48V	1.25A	1.25A	90%	60W	
UPF75S24CW(V1)	AC90~264V	18~24V	3.12A	3.12A	89%	75W	199x73x52.8/1kg
UPF75S36CW(V1)		27~36V	2.08A	2.08A	89%	75W	
UPF75S48CW(V1)		36~48V	1.56A	1.56A	90%	75W	
UPF100S24CW(V1)	AC90~264V	18~24V	4.16A	4.16A	91%	100W	220x73x52.8/1.1kg
UPF100S36CW(V1)		27~36V	2.77A	2.77A	91%	100W	
UPF100S48CW(V1)		36~48V	2.08A	2.08A	91%	100W	
UPF150S24CW(V1)	AC90~264V	18~24V	5.62A	6.25A	91%	150W	262x73x52.8/1.5kg
UPF150S36CW(V1)		27~36V	3.74A	4.16A	91%	150W	
UPF150S48CW(V1)		36~48V	2.8A	3.12A	91%	150W	
UPF200S24CW(V1)	AC90~264V	18~24V	7.5A	8.33A	91%	200W	264x95x55/1.9kg
UPF200S36CW(V1)		27~36V	5A	5.55A	91%	200W	
UPF200S48CW(V1)		36~48V	3.74A	4.16A	91%	200W	



ENCLOSED SWITCHING POWER SUPPLY

UP-L2 SERIES
UP-L SERIES
UP SERIES



UP-L2 SERIES

50~350W

Single output



- **Constant voltage design**
- Low cost, high reliability
- Protections : Overload/Over voltage/Short circuit
- Cooling by free air convection(Cooling by Fan:350W)
- Design for indoor **LED lighting and LED sign with waterproof box applications**
- 100% full load burn-in test
- 2years warranty



- AC input voltage range : **200-240VAC**
- DC adjustment range : Fixed,can be modified within $\pm 5\%$ rated output voltage. (but, do not use over the rated Power)
- Over load protection : Over 110% hiccup mode, auto-recovery
- Over voltage protection : 115-140% rated output voltage
- Withstanding voltage
I-O : 3KVAC, I-FG : 1.5KVAC,O-FG : 0.5KVAC, 1minute
- Isolation resistance
I-O, I-FG, O-FG : 100 M ohms/500VDC
- Working temperature : -20~+60°C(refer to output derating curve)
- Safety standards : K61347-1 ,K61347-2-13
- EMC standards : K00015, K61547, K61000-4-2, 3, 4, 5, 6, 11



Model No.	Input Voltage	Output Voltage	Output Current	Efficiency	Max. Power	Size(mm)/Weight
UP50S12L2	AC200~240V	12V	4.2A	82%	50W	112x78x35/0.25kg
UP75S12L2	AC200~240V	12V	6.3A	82%	75W	129x97.5x38/0.34kg
UP100S12L2	AC200~240V	12V	8.4A	82%	100W	159x97.5x38/0.42kg
UP200S12L2	AC200~240V	12V	16.7A	85%	200W	200.5x98x41.5/0.6kg
UP350S12L2	AC200~240V	12V	29A	85%	348W	215x115x50/0.95kg

UP-L SERIES

15~350W

Single output



- **Constant voltage design**
- Low cost, high reliability
- Wide input voltage range
- Protections : Overload/Over voltage/Short circuit.
- Cooling by free air convection(Cooling by Fan : 350W)
- Design for indoor **LED lighting and LED sign with waterproof box applications**
- 100% full load burn-in test
- 2years warranty



- AC input voltage range : **90-264VAC**(15~100W)/selectable by switch(150~350W)
- DC adjustment range : Fixed,can be modified within $\pm 5\%$ rated output voltage. (but, do not use over the rated Power)
- Over load protection : Over 110% hiccup mode, auto-recovery
- Over voltage protection : 115-140% rated output voltage
- Withstanding voltage
I-O : 3KVAC, I-FG : 1.5KVAC, O-FG : 0.5KVAC, 1minute
- Working temperature : $-20\sim+60^{\circ}\text{C}$ (refer to output derating curve)
- Isolation resistance
I-O, I-FG, O-FG : 100 M ohms/500VDC
- Safety standards : EN60950-1 / K61347-1, K61347-2-13
- EMC standards : K00015,K61547,K61000-4-2,3,4,5,6,11

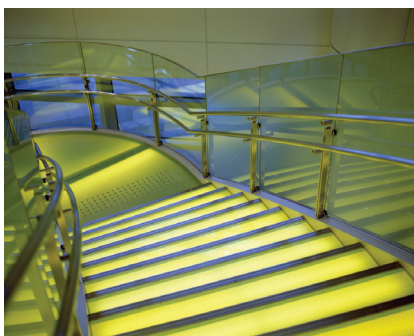
CB CE

Model No.	Input Voltage	Output Voltage	Output Current	Efficiency	Max. Power	Size(mm)/Weight
UP15S05L	AC90~264V	5V	3A	75%	15W	85x58x38/0.15kg
UP15S12L		12V	1.3A	78%	15W	
UP15S24L		24V	0.7A	80%	15W	
UP30S05L	AC90~264V	5V	6A	75%	30W	112x78x35/0.25kg
UP30S12L		12V	2.5A	80%	30W	
UP30S24L		24V	1.3A	82%	30W	
UP50S05L	AC90~264V	5V	10A	75%	50W	129x97.5x38/0.34kg
UP50S12L		12V	4.2A	80%	50W	
UP50S24L		24V	2.1A	82%	50W	
UP75S12L	AC90~264V	12V	6.3A	80%	75W	159x97.5x38/0.42kg
UP75S24L		24V	3.2A	83%	75W	
UP100S12L	AC90~264V	12V	8.4A	82%	100W	159x97.5x38/0.45kg
UP100S24L		24V	4.2A	84%	100W	
UP150S05L	AC90~132V	5V	25A	80%	125W	200.5x98x41.5/0.6kg
UP150S12L	AC180~264V	12V	12.5A	84%	150W	
UP150S24L		24V	6.3A	86%	150W	
UP200S12L	AC90~132V	12V	16.7A	86%	200W	199x109x50/0.85kg
UP200S24L	AC180~264V	24V	8.4A	88%	200W	
UP350S12L	AC90~132V	12V	29A	83%	348W	215x115x50/0.95kg
UP350S24L	AC180~264V	24V	14.6A	87%	350W	

UP SERIES

15~1500W

Single output



● Constant voltage design

- Protections : Overload/Over voltage/Short circuit/Over temp.
- Cooling by free air convection(Cooling by Fan : 300~1500W)
- Design for **indoor LED lighting applications**
- 100% full load burn-in test
- 3years warranty



- AC input voltage range : **85-264VAC**(15-100W) / selectable by switch(150-850W) / 200-240VAC(1000-1500W)
- DC adjustment range : Fixed,can be modified within $\pm 5\%$ rated output voltage. (but, do not use over the rated Power)
- Over load protection : Over 110% of rating, auto-recovery
- Over voltage protection : 115-140% rated output voltage
- Withstanding voltage
I-O : 3KVAC, I-FG : 1.5KVAC,O-FG : 0.5KVAC, 1minute
- Isolation resistance
I-O, I-FG, O-FG : 100 M ohms/500VDC
- Working temperature : -10~+60°C(refer to output derating curve)
- Safety standards : EN60950-1/ K61347-1 ,K61347-2-13(only for 50~600W)
- EMC standards : K00015,K61547,K61000-4-2,3,4,5,6,11(only for 50~600W)



Power	Input	Output					Size / Weight
		Model No.					
15W	AC85-264V	5V3A	9V1.6A	12V1.2A	15V1A	24V0.6A	97.5 x 64 x 32/0.23kg
		UP15S05	UP15S09	UP15S12	UP15S15	UP15S24	
30W	AC85-264V	5V6A	9V3.3A	12V2.5A	15V2A	24V1.2A	98 x 79 x 37/0.26kg
		UP30S05	UP30S09	UP30S12	UP30S15	UP30S24	
50W	AC85-264V	5V10A	9V5.5A	12V4.1A	15V3.3A	24V2A	125 x 83 x 40/0.31kg
		UP50S05	UP50S09	UP50S12	UP50S15	UP50S24	
75W	AC85-264V	5V15A		12V6.2A	15V5A	24V3.1A	135 x 96 x 40/0.41kg
		UP75S05		UP75S12	UP75S15	UP75S24	
100W	AC85-264V			12V8.3A	15V6.6A	24V4.1A	135 x 96 x 40/0.41kg
				UP100S12	UP100S15	UP100S24	
150W	AC100-120V	5V30A		12V12.5A	15V10A	24V6.2A	207 x 105 x 46/0.85kg
	AC200-240V	UP150S05		UP150S12	UP150S15	UP150S24	
200W	AC100-120V			12V16.6A	15V13.3A	24V8.3A	231 x 114 x 50/0.9kg
	AC200-240V			UP200S12	UP200S15	UP200S24	
220W	AC100-120V			12V18.3A	15V14.6A	24V9.1A	231 x 114 x 50/0.9kg
	AC200-240V			UP220S12	UP220S15	UP220S24	
300W	AC100-120V			12V25A		24V12.5A	231 x 114 x 50/0.95kg
	AC200-240V			UP300S12		UP300S24	
400W	AC100-120V			12V33.3A		24V16.6A	231 x 114 x 70/1.2kg
	AC200-240V			UP400S12		UP400S24	
500W	AC100-120V			12V41.6A		24V20.8A	254 x 146 x 70.6/2kg
	AC200-240V			UP500S12		UP500S24	
600W	AC100-120V			12V50A		24V25A	254 x 146 x 70.6/2kg
	AC200-240V			UP600S12		UP600S24	
750W	AC100-120V			12V6.25A		24V31.2A	285 x 170 x 85/2.8kg
	AC200-240V			UP750S12		UP750S24	
850W	AC100-120V			12V70.8A		24V35.4A	285 x 170 x 85/2.8kg
	AC200-240V			UP850S12		UP850S24	
1000W	AC200-240V			12V83.3A		24V41.6A	350 x 153 x 80/3.5kg
				UP1000S12		UP1000S24	
1200W	AC200-240V					24V50A	376 x 200 x 105/5.2kg
						UP1200S24	
1500W	AC200-240V					24V62.5A	376 x 200 x 105/5.2kg
						UP1500S24	



UP-D SERIES

15~50W Dual output

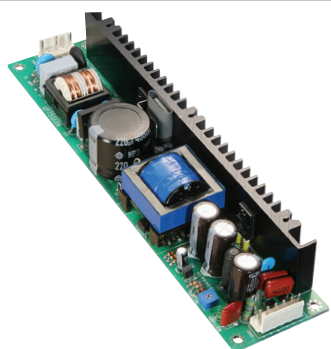
UP-T SERIES

15~50W Triple output

- **Constant voltage design**

- Wide input voltage range
- LED indicator for power on
- Protection : Over load/Over voltage/Shot circuit
- Suitable for industrial applications
- 3years warranty

Enclosed Switching Power Supply



UP-N SERIES

15~150W Single output

- **Constant voltage design**

- Non-cover type
- Protection : Over load/Over voltage/Shot circuit
- Suitable for industrial applications
- 3years warranty

Open Frame Switching Power Supply



DC-Output type

3~40A DC Input / DC Output

1 PHASE type

2~50A DC or AC Input / AC-Output

2,3 PHASE type

15~50A DC or AC Input / AC-Output

- Normally open
- Built-in LED indicator
- Suitable for industrial applications
- 3years warranty

Solid state Relay



1 PHASE type

3~400A


3 PHASE type

10~1000A

- Excellent filtering for normal mode and common mode noise
- Low leakage
- Suitable for industrial & medical & equipment, OA, FA applications
- 3years warranty

Noise Filter

UNION



ELECOM CO., LTD.

102-1207, Chunui Techno Park1, #200-1, Chunui-Dong,

Wonmi-Ku, Buchun-si, Gyeongki-Do, Korea

Tel. +82-32-668-9560~4 Fax. +82-32-668-9565

www.unionelecom.co.kr